

***Lessingia arachnoidea* Greene**

CRYSTAL SPRINGS LESSINGIA

Asteraceae

Status:

CNPS Rare Plant Rank 1B.2

Federal: unlisted

State: unlisted

State Rank: S1

Habitat: Serpentine endemic, often roadsides. Cismontane woodland, chaparral, coastal scrub, valley and foothill grassland. 40-300 meters (131-984 feet)



Toni Corelli

Counties:

San Mateo

Sonoma

Life Form:

Dicot

annual herb

Bloom period:

July - Oct



[CNPS Rare and Endangered Plant Inventory Listing](#)

[Jepson eFlora Taxon page](#)

[Jepson eFlora key](#)

[Calflora Taxon Report](#)

[CalPhotos Database Results](#)

[Consortium of California Herbaria Records](#)



Ken Hickman



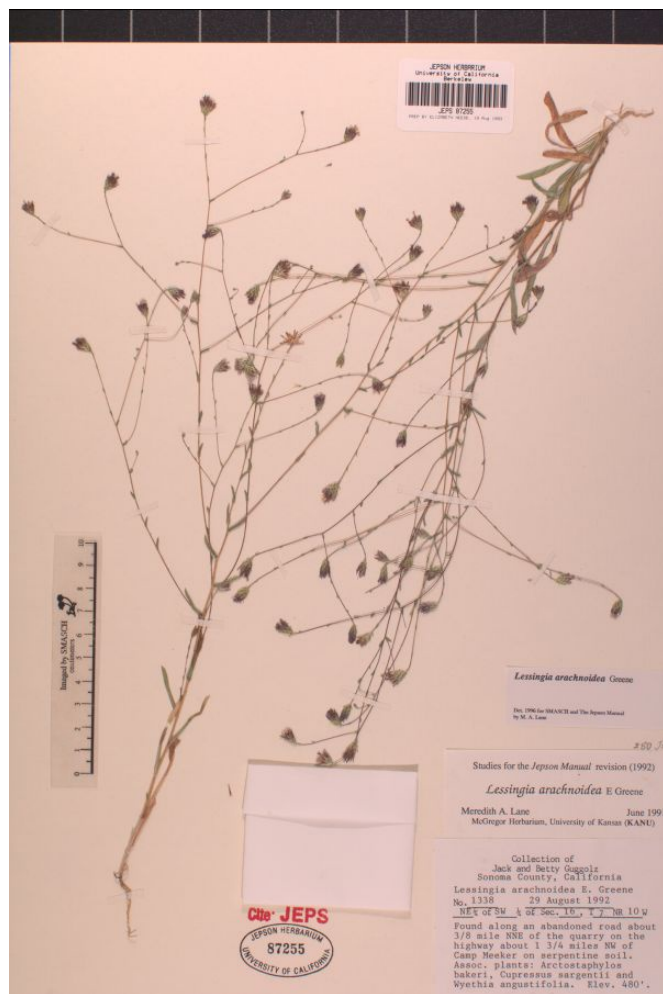
Neal Kramer

Key to our local *Lessingia* with white, pink, or lavender flowers

1. Phyllaries generally glabrous, rarely sparsely hairy, occasionally with stalked and/or bead-like sessile glands
2. Phyllary glands 0 or bead-like, sessile.....*Lessingia micradenia* var. *glabrata* (SMOOTH LESSINGIA)
- 2' Phyllaries with stalked glands (not known to occur in San Mateo or Santa Clara county..... *Lessingia micradenia* var. *micradenia* (TAMALPAIS LESSINGIA)

- 1' Phyllaries sparsely hairy, tomentose, or woolly, occasionally with bead-like sessile glands
3. Basal leaves withered at flower; involucre 4–8 mm; style-branch appendage short-triangular; pappus generally < fruit (except in Sonoma Co.).....
.....*Lessingia arachnoidea* (CRYSTAL SPRINGS LESSINGIA)
- 3' Basal leaves generally persistent at flower; involucre (5)8–13 mm; style-branch appendage lanceolate; pappus \geq fruit.....*Lessingia hololeuca* (WOOLLY-HEADED LESSINGIA)

Basal leaves withered at flower



JEPS87255